



**REGIONAL SPECIALISED METEOROLOGICAL CENTRE-TROPICAL CYCLONES, NEW DELHI
SPECIAL TROPICAL WEATHER OUTLOOK**

DEMS-RSMC SPECIAL TROPICAL CYCLONES NEW DELHI DATED 25.10.2022

SPECIAL TROPICAL WEATHER OUTLOOK FOR NORTH INDIAN OCEAN (THE BAY OF BENGAL AND ARABIAN SEA) VALID FOR NEXT 120 HOURS ISSUED AT 0600 UTC OF 25.10.2022 BASED ON 0300 UTC OF 25.10.2022.

SUB: DEPRESSION WEAKENED INTO A WELL MARKED LOW PRESSURE AREA OVER NORTHEAST BANGLADESH AND ADJOINING MEGHALAYA.

THE DEPRESSION OVER NORTHEAST BANGLADESH AND NEIGHBORHOOD MOVED NORTH-NORTHEASTWARD AND FURTHER WEAKENED INTO A **WELL MARKED LOW PRESSURE AREA** AND LAY CENTERED OVER **NORTHEAST BANGLADESH AND ADJOINING MEGHALAYA** AT 0300 UTC OF TODAY, THE 25TH OCTOBER. IT IS VERY LIKELY TO CONTINUE TO MOVE NORTH-NORTHEASTWARDS AND WEAKEN INTO A LOW PRESSURE AREA DURING NEXT 6 HOURS.

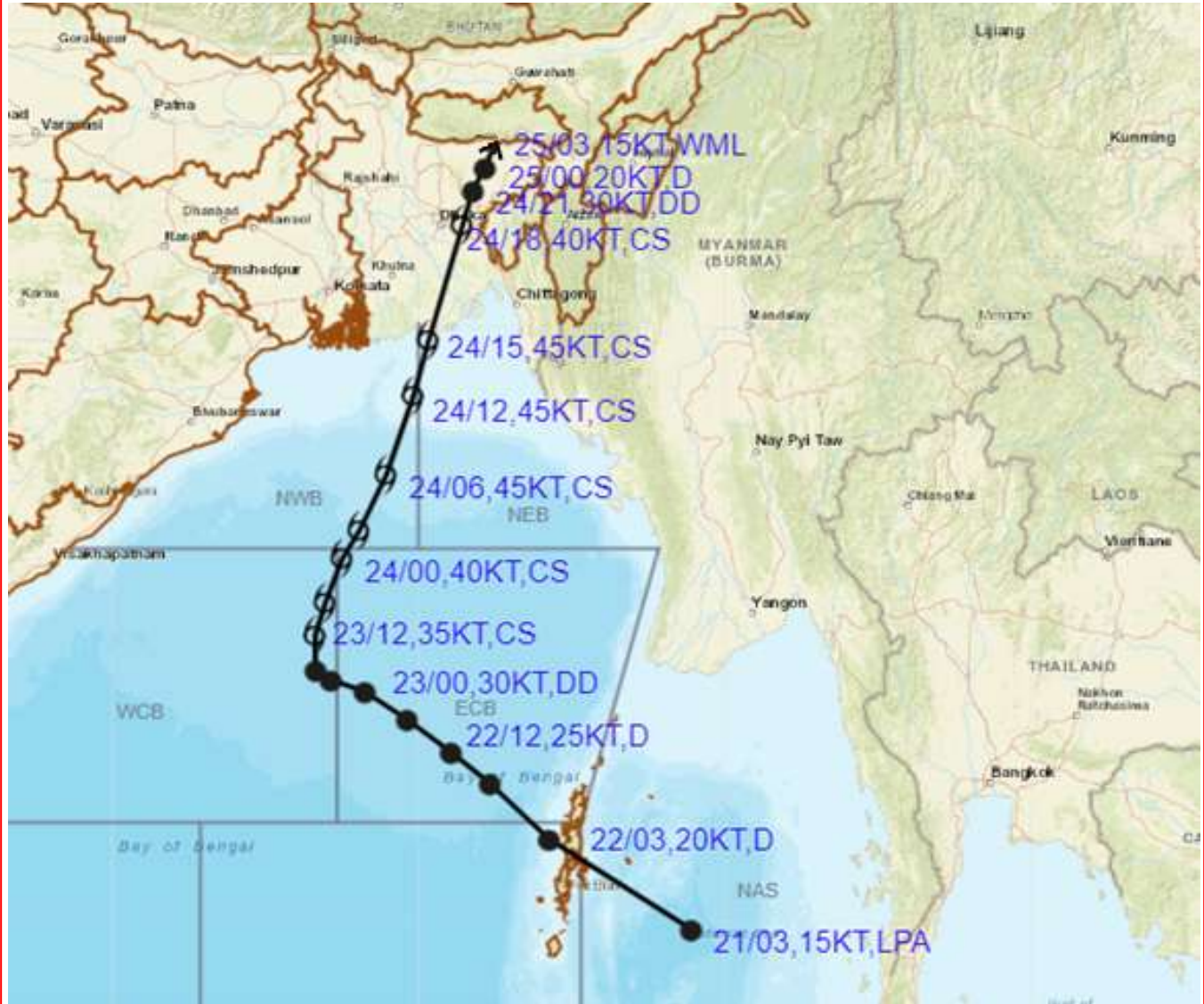
INSAT 3D SHOWS CLOUDS OVER NORTHEAST BANGLADESH AND NORTHEASTERN STATES OF INDIA. ASSOCIATED BROKEN LOW/MEDIUM CLOUD WITH EMBEDDED MODERATE TO INTENSE CONVECTION OVER ASSAM, ARUNACHAL PRADESH, MANIPUR, MEGHALAYA AND NORTHEAST BANGLADESH.

THIS IS THE LAST BULLETIN PERTAINING TO THIS SYSTEM. HOWEVER, REGULAR BULLETIN WILL BE CONTINUED FROM RSMC.

**(R. K. Jenamani)
Scientist-F, RSMC, New Delhi**



OBSERVED TRACK OF CYCLONIC STORM "SITRANG" DURING 22ND-25TH OCTOBER, 2022



DATE/TIME IN UTC

IST=UTC + 0530

L: LOW PRESSURE AREA

WML: WELL MARKED LOW PRESSURE AREA

D: DEPRESSION (17-27 KT)

DD: DEEP DEPRESSION (28-33 KT)

CS: CYCLONIC STORM (34-47 KT)

SCS: SEVERE CYCLONIC STORM (48-63KT)

VSCS: VERY SEVERE CYCLONIC STORM (64-89 KT)

ESCS: EXTREMELY SEVERE CYCLONIC STORM (90-119 KT)

SuCS: SUPER CYCLONIC STORM (≥ 120 KT)

- LESS THAN 34 KT
- 34-47 KT
- ≥ 48 KT
- OBSERVED TRACK
- FORECAST TRACK
- CONE OF UNCERTAINTY

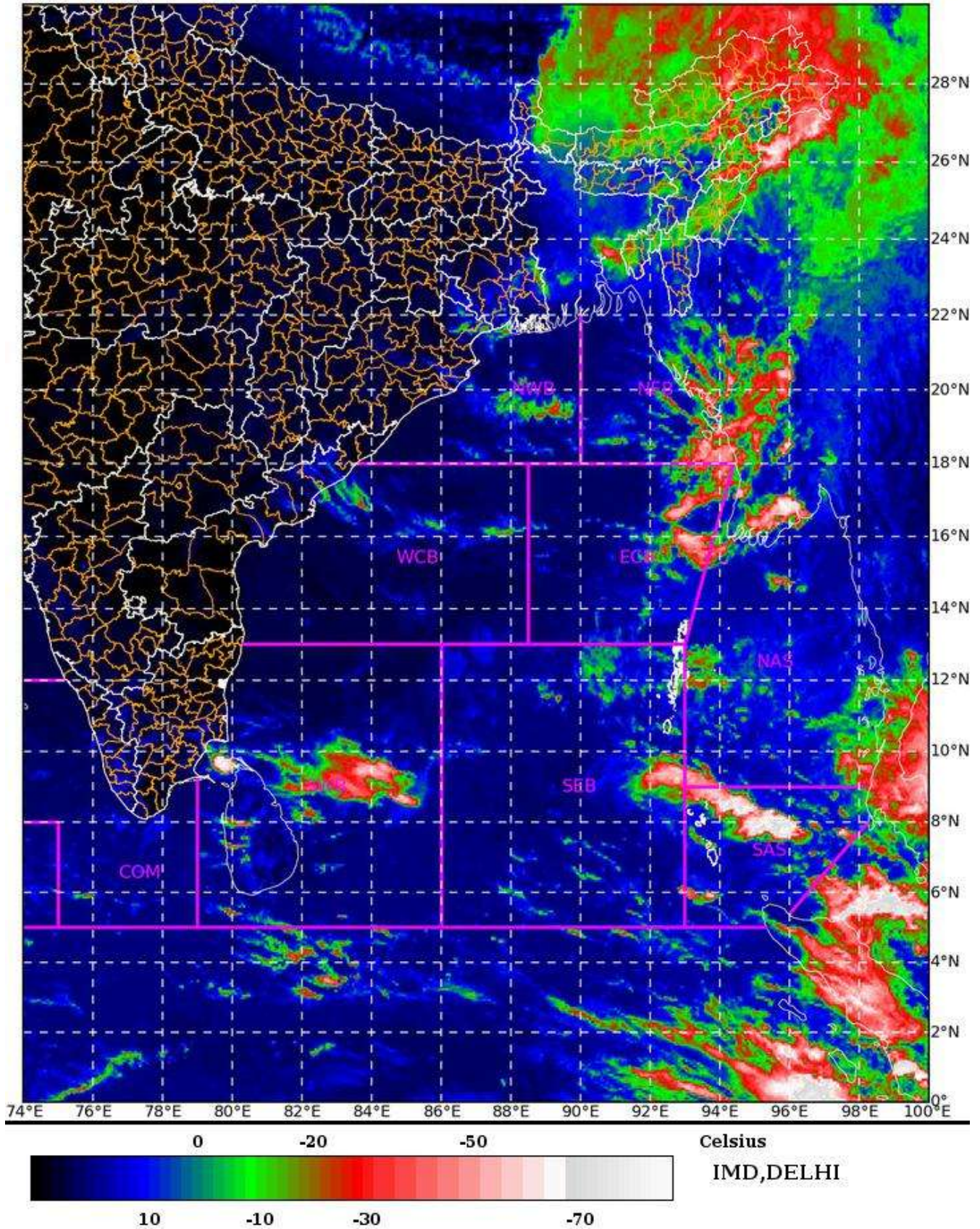
SAT : INSAT-3D IMG

25-10-2022/(0530 to 0557) GMT

IMG_TIR1_TEMP 10.8 um

25-10-2022/(1100 to 1127) IST

L1C Mercator



Cloud distribution: (a) Isolated: <25%, Scattered:25-50%, Broken: 51-75%, Solid:>75%, Convection Intensity: (a) Weak: Cloud Top Temperature (CTT) >-25°C, (b) Moderate: CTT: - 25°C to -40°C, (c) Intense: CTT: - 41°C to -70°C and (d) Very Intense: : Less than -70°C
PROBABILITY OF CYCLOGENESIS (FORMATION OF DEPRESSION):NIL: 0%, LOW: 1-33%, , MODERATE: 34-66% AND HIGH: 67-100%
This is a guidance Bulletin for WMO/ESCAP Panel Member countries. Visit respective National websites for Country specific Bulletins